

# Village of Chaumont Dissolution Study

Population Trends, Demographics, & Socioeconomics  
June 3, 2019



Visit the website: <https://www.danc.org/chaumont-study>

# Village of Chaumont Dissolution Study - Introductions

## **Chaumont Study Committee Members**

Scott Aubertine, Town Supervisor  
Ed Demattia  
Robin Grovesteen  
Fred Jackson  
Bill Johnson  
Jim Morrow, Village Trustee  
Scott Radley  
Valerie Rust, Village Mayor  
Marcie Travers-Barth  
Pat Weston, Town Highway Superintendent

## **Consultant: Development Authority of the North Country**

Carrie Tuttle - Director of Engineering  
Star Carter – Assistant Director of Engineering

## **Department of State: Local Government Specialist**

John Demarest

# Village of Chaumont Dissolution Study - Background

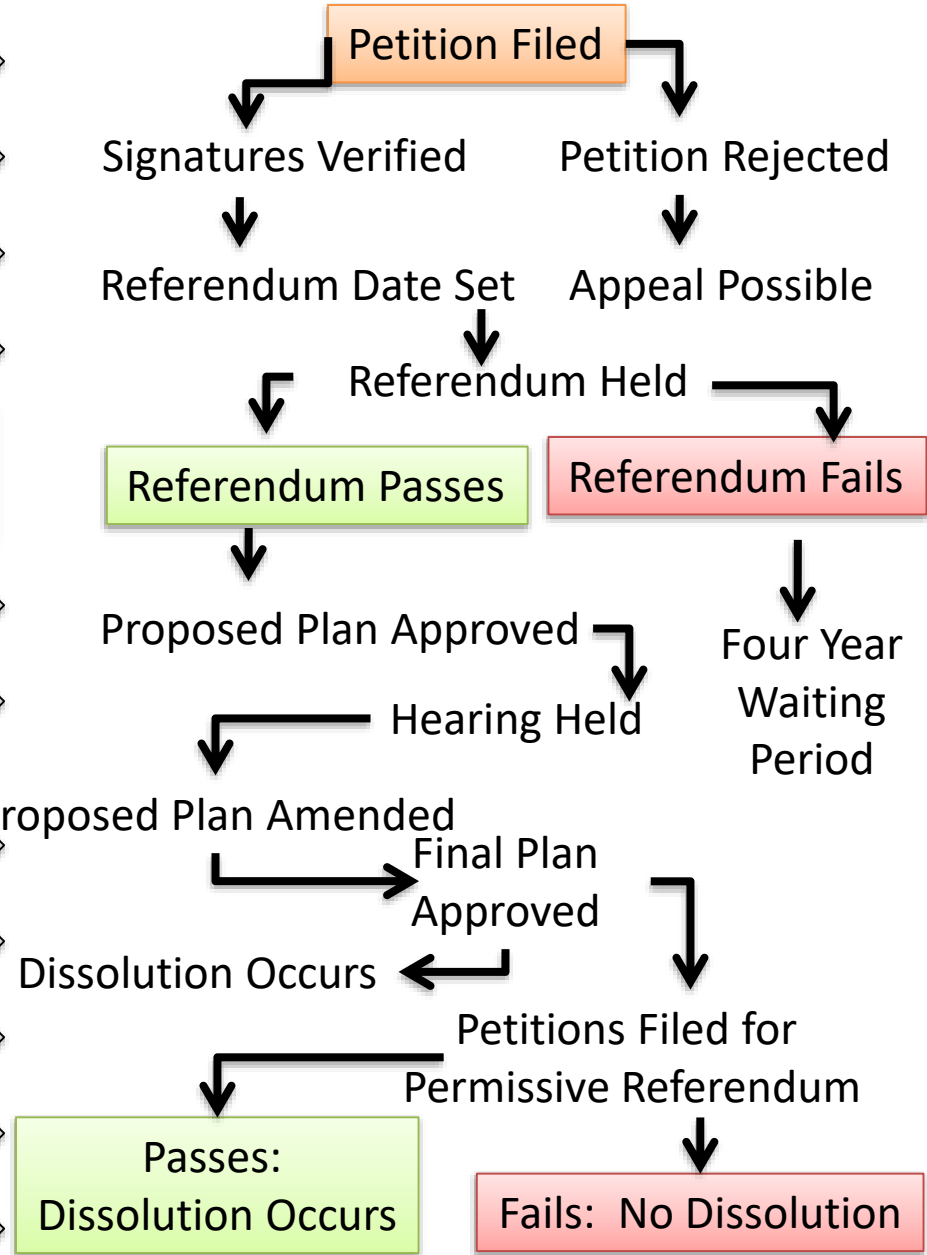
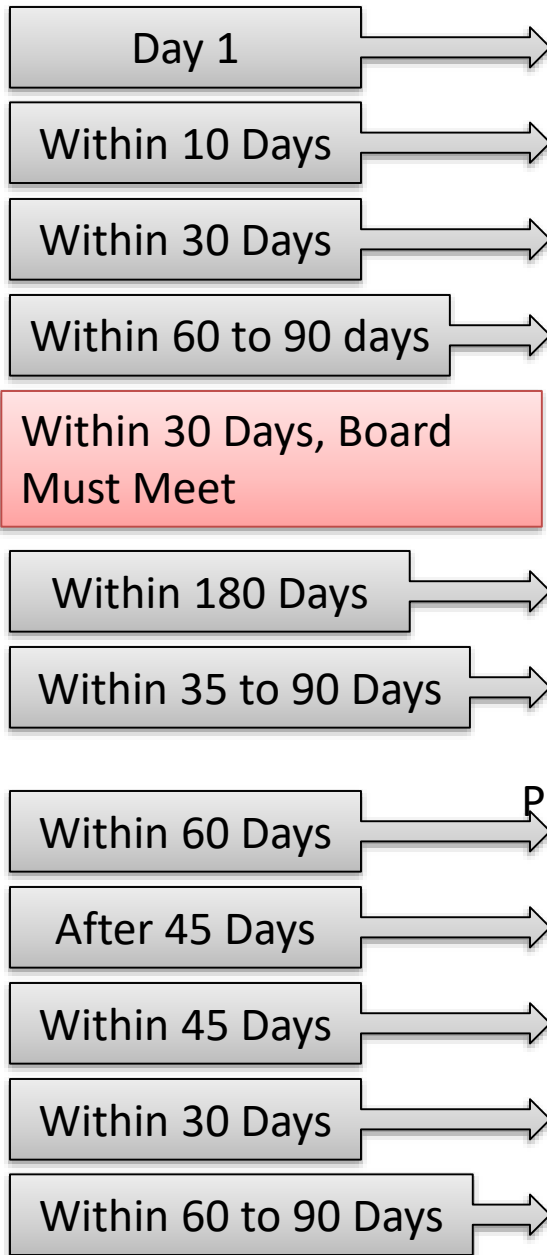
- ❖ Chaumont residents have considered dissolution twice in the past (1999 and 2012).
  - 1999: A study was not completed, but a petition was sent to all Village property owners asking if they wanted to move forward with a process to dissolve the village. The result of that petition was: 129 “No” vs. 72 “Yes”.
  - 2012: A study completed by CGR projected 49% savings in municipal taxes for Village taxpayers and an 8% increase for Town taxpayers. The November 2012 referendum resulted in a majority voting against dissolution: 145 “No” vs. 102 “Yes”. Link to 2012 CGR Study Reports: <http://archive.cgr.org/chaumont/index.aspx>
- ❖ The question of whether dissolution would positively impact Village taxpayers has been brought up again by Village officials for the following reasons:
  - Difficulty sustaining Village services and maintaining/replacing assets and equipment without significantly raising taxes and with limited resources
  - Rising employee benefit costs
  - Lack of volunteers to fill board positions
- ❖ The goal of this study is to explore alternatives to the way Village and Town services are currently provided to find opportunities for efficiency and tax savings. Dissolution is one alternative, but there may be other opportunities for shared services, cost reductions, and other savings outside of dissolution.

# Municipal Dissolution Processes:

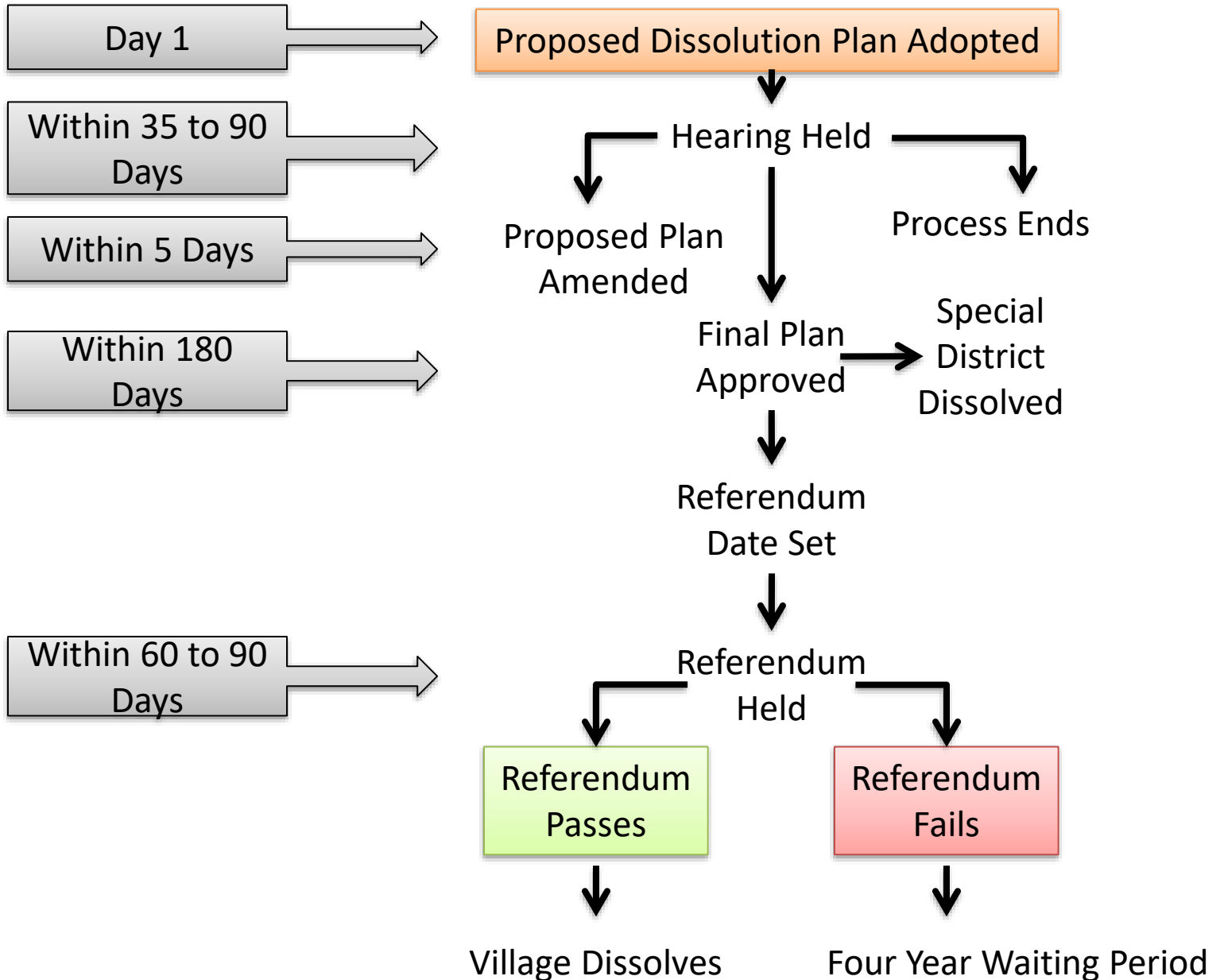
Voter initiated vs. Board initiated

There are two methods to initiate a Village dissolution. They each have their own procedures, requirements, and timelines.

# Voter-Initiated Dissolution



# Board-Initiated Dissolution Process



# Department of State Work Plan

The Village of Chaumont applied to the Department of State (DOS) for grant funding to conduct a Village Dissolution Study. The following Work Plan has been approved by DOS and is available for review on the Dissolution study website at: <https://www.danc.org/chaumont-study>

Phase	Description
<b>Existing Conditions</b>	Provide a foundation for the project in the form of an Existing Conditions Report that details the current municipal services and how they are delivered, financials, assets, and other details for the Village and Town.
<b><i>Public Meeting #1</i></b>	The Dissolution Study Committee will hold a public meeting to review the draft Existing Conditions Report with the public.
<b>Alternatives</b>	Analyze and develop possible alternatives to Village municipal service delivery, up to and including Village dissolution, that achieve cost savings and efficiencies in Village operations in the form of an Alternatives Report and Dissolution Plan (if recommended by committee).
<b><i>Public Meeting #2</i></b>	The Dissolution Study Committee will hold a public meeting to review the draft Alternatives Report and draft Dissolution Plan with the public.
<b>Final Report</b>	The Existing Conditions Report, Alternatives Report, and Dissolution Plan will be finalized by the Dissolution Study Committee and presented to the Village and Town Boards.
<b><i>Public Hearing</i></b>	The Final Dissolution Study Report will be presented to the public by the Village and Town Boards.

# Dissolution Study Meetings and Topics

Meeting	Month
#1 Kickoff and Demographics	June 3
#2 What Exists: Municipal Financials	June 26
#3 What Exists: Municipal Officials & Employees, Public Works, Water & Sewer	June 24
#4 What Exists: Local Laws, Fire & Ambulance	August 28
#5 Draft Existing Conditions Report	September 25
#6 Public Meeting #1 - Existing Conditions	October 23
#7 Alternatives: Dissolution and Other Shared Services Options	November 27*
#8 Alternatives: Second Meeting	December 25*
#9 Draft Alternatives Report	January 22
#10 Public Meeting #2 – Alternatives	February 26
#11 Final Dissolution Report and Plan	March 25

\* The meetings in November and December occur near major holidays and will be rescheduled.



# Location Map



# Chaumont, NY

## Village History

- ❖ The land where Chaumont exists was originally settled in 1802. It was named after Jacques-Donatien Le Ray de Chaumont, who is also known as the “Father of the American Revolution”. The Village was officially incorporated in 1874.
- ❖ The Village is located on Lake Ontario on a large freshwater bay. Most of Chaumont’s early economy was based on resources from the water, such as fishing and ship building. The Village is still popular with boaters and fisherman.
- ❖ Today, the majority of the Village’s employed residents work in healthcare and social assistance, law enforcement, education, or retail, and the average commute time to work is 22 minutes.

# Jefferson County Villages by Population (2010 Census data):

Village	Population	Village	Population
Herrings	90	Dexter	1,052
Ellisburg	244	Alexandria Bay	1,078
Deferiet	294	Brownville	1,119
Mannsville	354	Philadelphia	1,252
Glen Park	502	Black River	1,348
Evans Mills	621	Sackets Harbor	1,450
<b>Chaumont</b>	<b>624</b>	Adams	1,775
Antwerp	686	Clayton	1,978
Cape Vincent	726	West Carthage	2,012
Theresa	863	Carthage	3,747

## Jefferson County Towns by Population (2010 Census data):

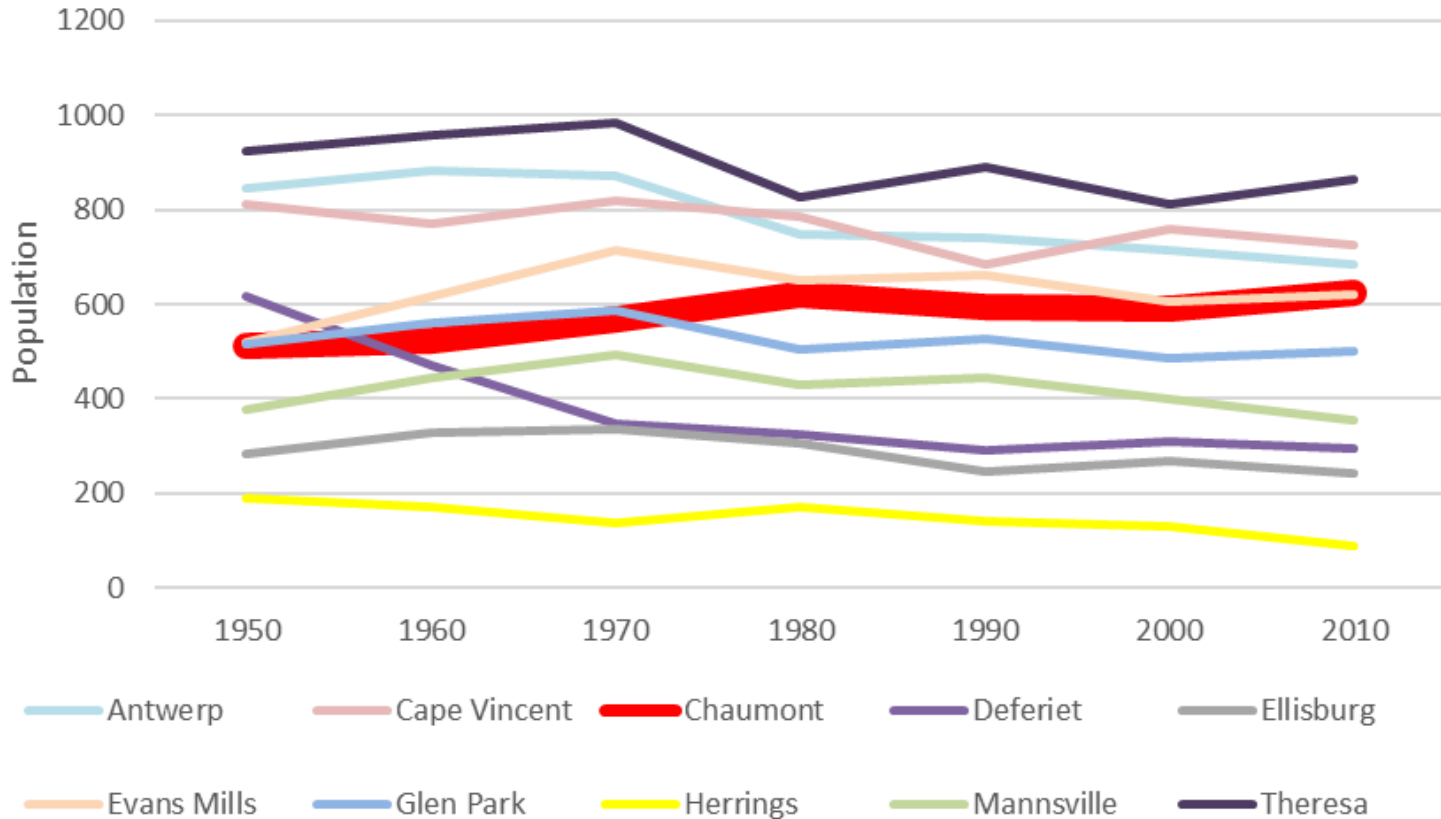
Town	Population
Worth	231
Lorraine	1,037
Rodman	1,176
Henderson	1,360
Antwerp	1,846
Philadelphia	1,947
<b>Lyme</b>	<b>2,185</b>
Cape Vincent	2,777
Orleans	2,789
Theresa	2,905
Rutland	3,060
Pamelia	3,160
Hounsfield	3,466
Ellisburg	3,474
Alexandria	4,061
Watertown	4,470
Champion	4,494
Adams	5,143
Clayton	5,153
Brownville	6,263
Wilna	6,427
LeRay	21,782

# Census Population Data

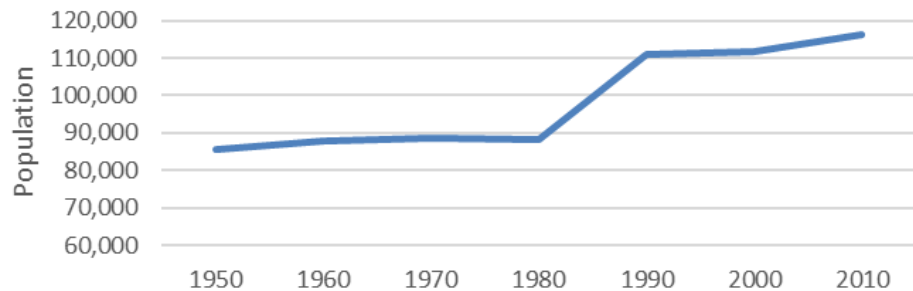
<b>Village and Town Populations, 1950-2010</b>			
	<b>Village Chaumont</b>	<b>Town Lyme</b>	<b>Total</b>
<b>1950</b>	513	945	1,458
<b>1960</b>	523	925	1,448
<b>1970</b>	567	983	1,550
<b>1980</b>	620	1,075	1,695
<b>1990</b>	593	1,108	1,701
<b>2000</b>	592	1,423	2,015
<b>2010</b>	624	1,561	2,185

Note: While the 2010 Census data is nine years old and could be considered outdated, we are using the population data from the decennial census, not the American Community Survey (ACS) estimates for years in between, because the estimates can vary drastically year to year. For example, the 2017 ACS population estimate for Chaumont was 887 people, while the 2018 estimate was 589 people. There is a large difference between those estimates. For this study, we will use the official decennial 2010 census numbers.

## Population Trends Villages Under 1,000 People

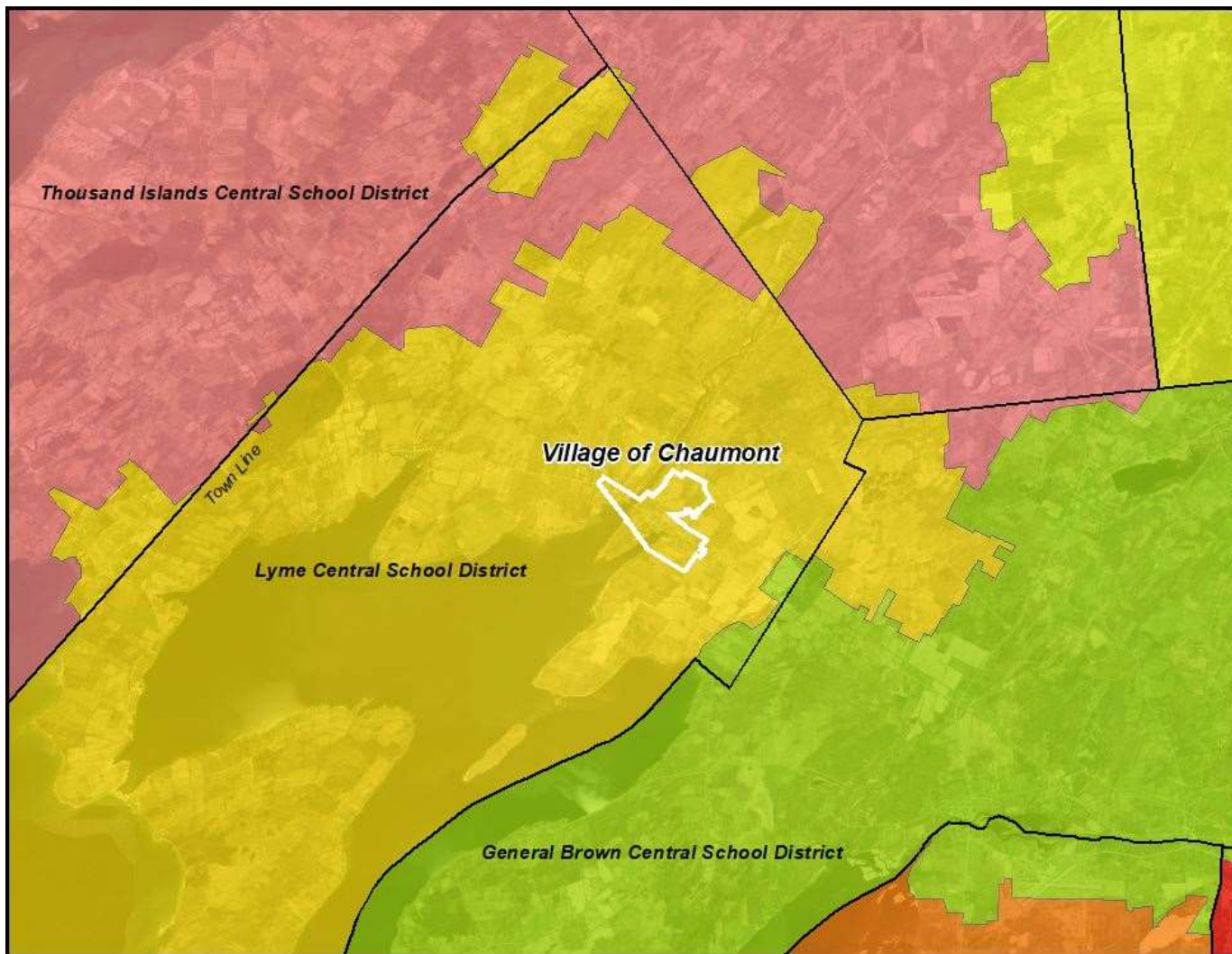


## Jefferson County



# School Districts

The dissolution study will have no impact on either school or County taxes, since these are separate from Village and Town taxes. Information about the school districts serving the Village of Chaumont and the Town of Lyme is for reference purposes only.



# Population Demographics - Income 2010

## Notes about Census Poverty Statistics:

- Poverty threshold in 2010 varied from \$10,458-\$48,527 depending on how many people lived in a household (1 person to 9 or more)
- Census poverty threshold is set nationwide and does not vary geographically

## Jefferson County Villages

Municipality	Median Household Income	Percentage "All People" Below Poverty Level
<b>Village Chaumont</b>	<b>\$39,167</b> <small>(\$56,250 estimate for 2017)</small>	<b>9%</b> <small>(6.1% estimate for 2017)</small>
<b>Town Lyme</b>	<b>\$48,182</b> <small>(\$49,000 estimate for 2017)</small>	<b>11%</b> <small>(12.1% estimate for 2017)</small>
Sackets Harbor	\$64,583	5.80%
Black River	\$57,857	9%
Brownville	\$55,417	13.70%
Glen Park	\$53,125	10.90%
Mannsville	\$52,639	5.50%
Antwerp	\$51,875	10.90%
Deferiet	\$49,375	15.50%
Evans Mills	\$47,321	9.10%
Theresa	\$46,875	11.90%
Cape Vincent	\$44,286	14.80%
Clayton	\$43,594	11.90%
Adams	\$43,405	13.90%
Philadelphia	\$40,000	10.50%
Carthage	\$39,872	15.30%
Dexter	\$38,333	12.20%
West Carthage	\$37,875	16%
Ellisburg	\$36,250	10.30%
Herrings	\$36,250	42.40%
Alexandria Bay	\$31,538	14.30%

Source:  
US Census Bureau



# Real Property Statistical Information

## 2018 Assessed Values

The dissolution study committee will review the real property in the Village and the Town to analyze municipal-owned property, State-owned property, seasonal residences, tax-exempt property, total assessed values, and other details that are pertinent to the study.

The tables below highlight a few preliminary details about the Village and Town Real Property.

<b>Real Property Assessed Values All Parcels within Village or Town</b>	<b>Chaumont (V) 2018 347 Village Parcels</b>	<b>Lyme (T) 2018 3,002 Town Parcels</b>
Total Taxable Assessed Value	Taxable Village: \$37,390,739	Taxable Town: \$358,016,540*
Highest Assessed Value Property Owner	\$2,723,600 Lyme Central School - <b>Tax Exempt</b> \$990,000 Bayview Housing- <b>Tax Exempt</b> \$665,700 Crescent Yacht Club	\$2,079,200 Chaumont WWTP – <b>Tax Exempt</b> \$1,970,000 Long Point State Park – <b>Tax Exempt</b> \$1,144,200 B. Palm
Average Taxable Assessed Value	\$118,127 (not including School or Bayview Housing)	\$121,203 (not including WWTP or NYS TI Park Comm)
Median Taxable Assessed Value	\$107,550 (not including School or Bayview Housing)	\$103,100 (not including WWTP or NYS TI Park Comm)

\* Town Total Taxable Assessed Value does not include Village parcels taxed by the Town

# Real Property Statistical Information

## Preliminary Parcel Details

Real Property 2018	Chaumont	Lyme
Seasonal Residence Parcels (Property Class 260)	4	777
Municipal-Owned Parcels	8 Village-owned 2 Town-owned	3 Village-owned 25 Town-owned
Tax Exempt Parcels	29	70

# Next Meeting: Municipal Financials

The committee will review the Revenues, Expenses, Tax Levies and other financial information for the Village of Chaumont and the Town of Lyme. The information will be sourced from Fiscal Year 2018 Annual Update Documents (AUDs), Open Book NY, and the Jefferson Real Property office, unless otherwise noted.

Copies of the AUDs are available for review on the Chaumont Dissolution Study website under the “Reference Documents” section.

The Village fiscal year is June-May, so the Village Fiscal Year 2018 figures are current to 5/31/18. The Town fiscal year is January-December, so the Town Fiscal Year 2018 figures are current to 12/31/18.

**Visit the website:**

<https://www.danc.org/chaumont-study>

# Questions or Comments?



Carrie Tuttle  
Director of Engineering  
315-661-3259  
[ctuttle@danc.org](mailto:ctuttle@danc.org)

Star Carter  
Assistant Director of Engineering  
315-661-3261  
[scarter@danc.org](mailto:scarter@danc.org)

John Demarest  
Department of State  
518-486-4669  
[john.demarest@dos.ny.gov](mailto:john.demarest@dos.ny.gov)